

# Healthcare Academy

DR. CHAD DALL  
DIRECTOR OF OUTREACH & ENGAGEMENT  
BELLIN COLLEGE

NCHSE WEBINAR SERIES 2024

*bellinhealth*



Official Healthcare Partner of  
the Green Bay Packers

*Bellin College*

A Better Education...A Better Future

# Goals of Today's Presentation

- **Building a Team**
  - Need key decision-makers
  - Representation from all stakeholders
- **Components of an Academy**
  - Can be done with any career cluster or pathway
  - Career Exploration
  - College Credits
  - Mentorship
  - Youth Apprenticeship
- **How can we help you?**
  - Create your own Academy?



# Healthcare Academy

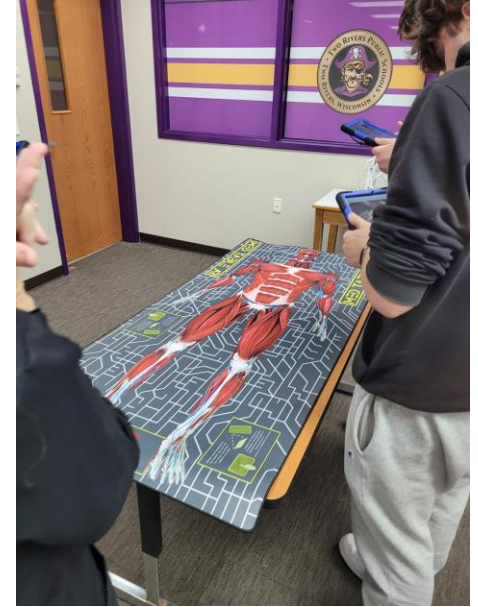
The Academy is a partnership between Bellin College, Bellin Health and our local community school districts.

The Wisconsin Hospital Association release a report in March of 2024 that 10% of the workforce simply put does not exist in hospitals and competition for team members is fierce.

## There are four wins to the program:

- The High School Student wins by being exposed to purpose filled stable careers in healthcare. They get to find out, this makes sense to me or it doesn't, both of which are good.
- The School District wins as creating meaningful career exploration for its students is its mission and purpose.
- The Health System wins as they have the opportunity to engage future professionals, encourage them to choose healthcare careers and then vet them out early.
- Bellin College wins by encouraging enrollment in one of their excellent careers, Nursing, Physical Therapy, Surgical Assist and Radiologic Sciences

# Exposure Events at grades K-12



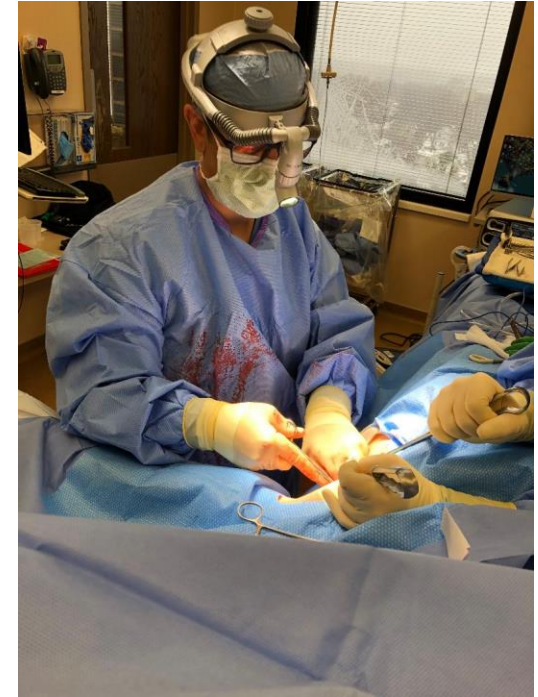
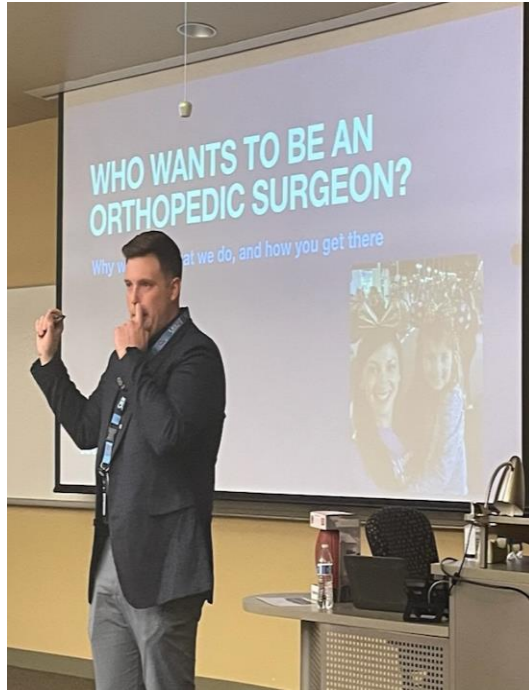
# Exposure Events at Bellin College



# Exposure Events at Bellin College



# Exposure Events at Bellin College



# Bellin College Healthcare Academy

## Core Healthcare Career Courses

### Fall

HC 100..... Introduction to Healthcare.....	3 credits (hybrid)
CM 110 ..... Customer Service in Healthcare .....	3 credits (asynchronous online)
SS 100 ..... Student Success course .....	1 credit (asynchronous online)

**Total: 7 credits**

### Spring

HC 105* ..... Medical Terminology .....	2 credits (asynchronous online)
NA 150* ..... Nursing Assistant .....	3 credits (face to face or hybrid)

**Total: 5 credits**

*\*Complete course through current agreement  
or with Bellin College*

***Student applies and interviews for the internship opportunities  
through Youth Apprenticeship***



- **Introduction to Healthcare:** Overview of the healthcare delivery system. Students are exposed to the business model, team member roles, financial implications, and care options within a healthcare delivery system.
- **Customer Service in Healthcare:** Introduction to healthcare specific customer needs. Students learn and improve skills and strategies in communication standards, patient-centered care, and patient admission.
- **Student Success:** Students learn and improve skills and strategies that are essential to academic success. Topics include professionalism, time management, study skills, note-taking, test-taking strategies, stress management, reading strategies, and paper writing.



# Bellin College Healthcare Academy

## Supplemental Healthcare Career Courses

### Fall

HS 210.....	20 <sup>th</sup> Century American History and its Impact on Health .....	3 credits
MA 230.....	Statistics .....	3 credits
DI 202 .....	Diversity Issues in Healthcare .....	3 credits
MA 101.....	College Algebra .....	3 credits
PS 110 .....	Developmental Psychology .....	3 credits
HC 105.....	Medical Terminology .....	2 credits

### Spring

CM 100 .....	Health Communication .....	3 credits
PH 202.....	Medical Ethics.....	3 credits
BU 221.....	Healthcare Economics.....	3 credits
DI 326 .....	The Immigrant Experience in Modern America and its Implications for Healthcare.....	3 credits
DI 212 .....	World Religions.....	3 credits

**NOTE:** Schedule of course offerings is subject to change; courses are offered online with additional options available.



# Bellin College Healthcare Academy



- **History of Healthcare:** History of health care in the United States. Students will explore the effects of major social and political milestones on the evolution of health care, pharmacological advances, education, disease eradication, technology, the impact of war, and care delivery
- **Diversity Issues in Healthcare:** Introduce students to the historical, sociological, anthropological, and cultural resources for understanding the issues of diversity in health care in the America experience.
- **Developmental Psychology:** Developmental Psychology studies human growth and development across the entire lifespan. Students learn the characteristics of development from conception to death and the various influences on the development of human beings.
- **Statistics:** Statistical concepts in healthcare highlighted include the difference between correlation and causation, mortality and morbidity, and how to recognize statistical fallacies that may guide patient behavior.
- **Health Communication:** Surveys current issues, theory, and research surrounding health communication, and focuses on a variety of issues, such as perceptions of health, provider–patient relationships, health organizations, health campaigns, intercultural issues, and the use of new communication technologies in healthcare.
- **Medical Ethics:** Lays the groundwork of ethical theory and then quickly analyze ethical issues in clinical practice and social justice issues in the medical field.

# Bellin College Healthcare Academy

## Face to Face Science Courses

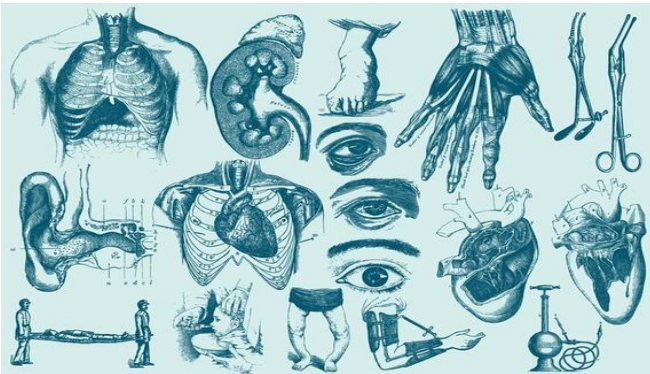
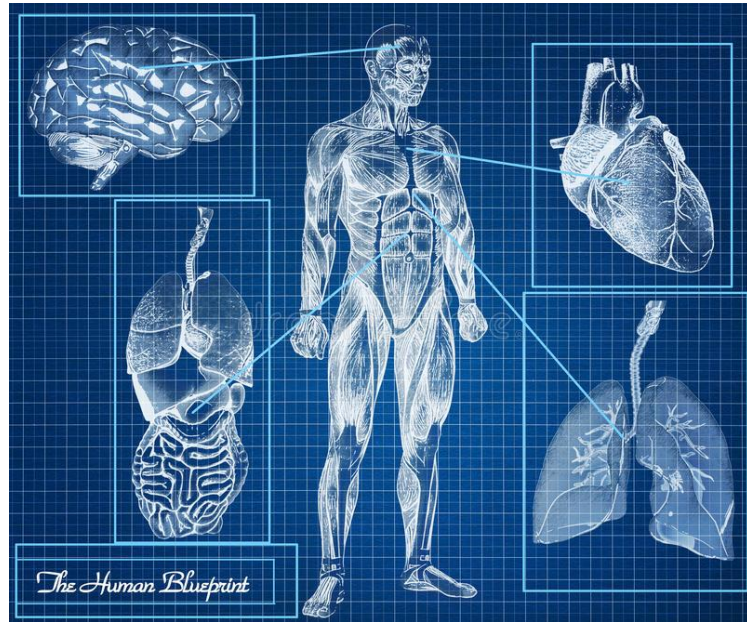
### Fall

BI 156 ..... Anatomy and Physiology I ..... 4 credits (face to face)

### Spring

BI 256 ..... Anatomy and Physiology II ..... 4 credits (face to face)

CH 122 ..... General Chemistry ..... 4 credits (face to face)



# Bellin College Healthcare Academy

## Level of Completion

## Courses

## Career Pathways

### Core Courses

HC 100 ..... Introduction to Healthcare  
 CM 110 ..... Customer Service in Healthcare  
 SS 100 ..... Student Success  
 HC 105\* ..... Medical Terminology  
 NA 150\* ..... Nursing Assistant

- Certified Nursing Asst.
- Medical Asst.
- Patient Admission Rep.
- Clinical Coder
- Health Informatics
- Patient Account Rep.
- Home Health Aide

### Supplemental and Science Courses

HS 210 ..... 20<sup>th</sup> Century American History and its Impact on Health  
 MA 230 ..... Statistics  
 DI 202 ..... Diversity Issues in Healthcare  
 MA 101 ..... College Algebra  
 PS 110 ..... Developmental Psychology  
 HC 105 ..... Medical Terminology  
 CM 100 .... Health Communication  
 PH 202 ..... Medical Ethics  
 BU 221 ..... Healthcare Economics  
 DI 326 ..... The Immigrant Experience in Modern American and its Implications for Healthcare  
 DI 212 ..... World Religions

- Athletic Trainer
- Surgical Technologist/First Asst.
- Registered Nurse
- Radiologic Technologist
- CT Technologist
- MRI Technologist
- Mammographer
- Diagnostic Medical Sonographer
- Radiation Therapist
- Physical Therapist
- Occupational Therapist
- Nurse Practitioner
- Certified Registered Nurse Anesthetist
- Physician Assistant
- Physician

# Mentorship



## So You Want to be a Physical Therapist... Helpful Tips to Consider at Each Stage of Education

### High School Preparation

---

- ❖ GPA (3.0+) – higher = better!
- ❖ ACT scores (24+) – higher = better!
- ❖ Shadowing Hours
  - Multiple health care settings:  
Outpatient, hospital, nursing home
- ❖ Community Service Hours (100+)
  - 2 to 3 Long Term Commitments
  - NOT multiple 1-hour long activities
- ❖ Establish a relationship with a mentor at **Bellin** to walk you through the process
- ❖ Research Universities with Your Program of Interest
  - Suggested majors:
    - Human Biology
    - Kinesiology
    - Exercise Science
    - Pre-med
    - Pre-PT
  - Wisconsin Direct Admission Undergraduate/ Graduate Programs for Physical Therapy
    - Carroll College
    - Marquette University
    - Concordia
- ❖ Arrange and Complete Campus Visits
  - **Goals:** Get Them to Know Your Name; Speak to their Mission and Vision; Ask lots of questions about their program
  - **People to Meet:**
    - Admissions Counselor
    - Dean of College of Health Science
    - Representative from the Physical Therapy Program
    - Current Students

### Undergraduate Studies

---

- ❖ Balance your academic and social life
- ❖ GPA (3.5+) – higher = better!
- ❖ Strong GRE Scores
  - Average Program Requires 70<sup>th</sup> Percentile for Each Category
- ❖ Shadowing Hours (150+)
  - Specific to Physical Therapy
  - Multiple Clinic Specialties
- ❖ Community Service
  - 2 to 3 Long Term Commitments
  - Choose experiences that are meaningful to future career path
- ❖ Campus Involvement
  - Pre-Physical Therapy Club
- ❖ Participate in Undergraduate Research
- ❖ Pursue Internship Opportunities
  - **Bellin** Sports Medicine Movement Performance and Injury Prevention Internship
- ❖ Communicate routinely with your Mentor
- ❖ Consider a Part-Time Job in the Medical Field to Increase Patient Contact Hours
  - CNA
  - Rehabilitation Aide – apply for **Bellin** Summer Aide position in November
- ❖ Research Types of Graduate Programs
  - 3 Year, Post-Graduate Program
  - 2 Year, Accelerated Program
  - Online/Hybrid Programs
- ❖ Make a List of Schools for Application
  - Recommend Applying to 8 Programs
  - Match programs to those where your GPA and GRE scores are competitive
- ❖ Identify Prerequisite Courses for Each Program to Ensure You Meet Requirements

### Undergraduate Studies (cont.)

---

- ❖ Identify Individuals for Letters of Recommendation and Ask if they will write them
  - Clinical Reference
  - Academic Reference
- ❖ Complete Mock Graduate School Interviews with your Mentor
- ❖ Arrange and Complete Program Visits
  - **Goals:** Get Them to Know Your Name, Speak to your Mission and Vision
- ❖ Personal Statement/Essay
  - Personal & Unique
  - Answers the Question Promptly and [Thoughtfully]

### Graduate Studies

---

- ❖ GPA (3.5 +)
- ❖ Continue to Utilize Your Mentor
- ❖ Identify Clinical Choices:
  - Orthopedics
  - Sports Medicine
  - Acute Care
  - Skilled Nursing Facility
  - Pediatrics
  - Home Health
  - Neurology
  - School-Based
  - Occupational Health
  - Wound Care
- ❖ Participate in Graduate Research - Publish if you can!
- ❖ Research Residency Options
  - Contact **Bellin** Health to Discuss Orthopedics and/or Sports Medicine Residency Options

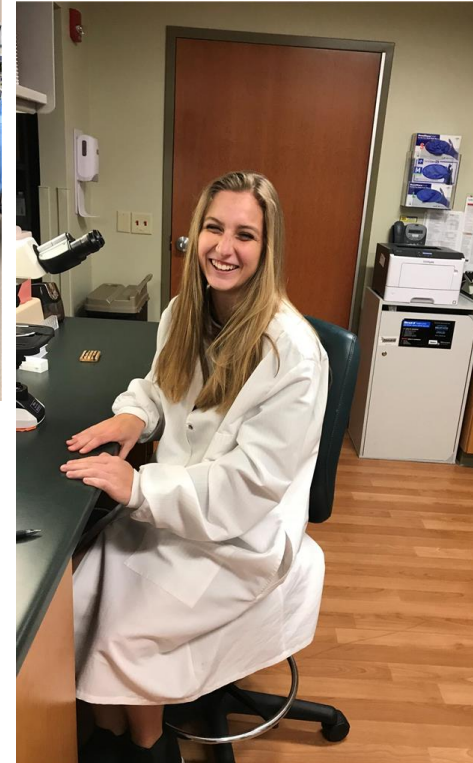
# Internship Opportunities



**TAILORED INTERNSHIP  
OPPORTUNITIES IN AREA  
OF YOUR INTEREST.**



**STUDENT/MENTOR  
CONNECTIONS**



# Healthcare Academy Costs



\$115 per credit with this agreement



Without this program most general education at a UW school costs are ~\$345 per credit



Courses are transferable to most colleges and universities

# Student Success



Lily Derenne

Senior at Luxemburg- Casco High School

Number of College Credits: 39

YA position: Bellin Health Neuroscience Care

Current Activities: Leos Club, Talls and Smalls

Mentor, Sources of Strength

Grace Seering

Senior at Luxemburg- Casco High School

Number of College Credits: 37

YA position: Bellin Health

Current Activities: Cross Country, Sources of

Strength, SALT, Track





# Student Success

## Student Testimonial: Kennedy Gezella

“I loved the opportunity to be so involved in the healthcare field from a young age as it exposed me to so much more of what I want for my future than any other job could have.”

“I have almost always wanted to end up with a career in healthcare, so working for Bellin through Youth Apprenticeship just confirmed the fact that I did.”

“I love my coworkers, the patients, the overall atmosphere in all.”

This is what I would tell other students: “Do it. It will help you make decisions about your future, show you things that you would not always be able to encounter, give you a great work environment with lots of opportunities to grow, and you will enjoy it and easily get the amount of hours you need.”

# Program Success by the numbers

## Year 1

HC Academy

Schools = 2

HC Participants = 39

YA participants =

Mentors =

Exposure Events = 2

Credits Taken = 325

## Year 2

HC Academy

Schools = 11

Participants = 250

YA participants = 91

Mentors =

Exposure Events = 6

Credits Taken = 670

## Year 3

HC Academy

Schools = 17

Participants =

YA participants =

Mentors =

Exposure Events =

TBD

Credits Taken = TBD

# Questions ?

Dr. Chad Dall

[Chad.dall@bellincollege.edu](mailto:Chad.dall@bellincollege.edu)

920-433-6691